



Mystery Afghan Knit-Along



MYSTERY AFGHAN KNIT-ALONG

CLUE #7

MEASUREMENTS

Approx 10 x 8 ins [25.5 x 20.5 cm].

MATERIALS

Bernat® Satin (100 g/3.5 oz; 149 m/163 yds)

Contrast A (04007 Silk)

Contrast B (04010 Camel)

Contrast C (04615 Banana)

Size 5 mm (U.S. 8) knitting needles **or size needed to obtain gauge**. Cable needle.

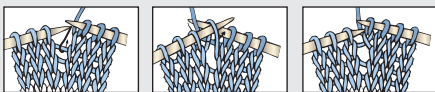
GAUGE: 18 sts and 24 rows = 4 ins [10 cm] in stocking st.

STITCH GLOSSARY

C6B = Slip next 3 stitches onto cable needle and leave at back of work. K3, then K3 from cable needle.

C6F = Slip next 3 stitches onto cable needle and leave at front of work. K3, then K3 from cable needle.

M1 = Make 1 stitch by picking up horizontal loop lying before next stitch and knitting into back of loop.



T4B = Slip next stitch onto cable needle and leave at back of work. K3, then P1 from cable needle.

T4F = Slip next 3 stitches onto cable needle and leave at front of work. P1, then K3 from cable needle.

Tw2R = Knit into front of 2nd stitch on left hand needle without slipping stitch off needle, then knit into front of 1st stitch and slip both stitches off needle together.

INSTRUCTIONS

Make 1 Block each with A, B and C.

Cast on 46 sts.

Foundation row: (WS). K3. *M1. K3. Rep from * to last st. K1. 60 sts.

1st row: (RS). K1. P3. Tw2R. P2. K6. P2. Tw2R. P2. K3. P4. C6B. P4. K3. P2. Tw2R. P2. K6. P2. Tw2R. P3. K1.

2nd row and Alt rows: K1, then knit all knit sts and purl all purl sts as they appear to last st. K1.

3rd row: K1. P3. Tw2R. P2. C6B. P2. Tw2R. P2. (T4F. P2. T4B) twice. P2. Tw2R. P2. C6F. P2. Tw2R. P3. K1.

5th row: K1. P3. Tw2R. P2. K6. P2. Tw2R. P3. T4F. T4B. P2. T4F. T4B. P3. Tw2R. P2. K6. P2. Tw2R. P3. K1.

7th row: K1. P3. Tw2R. P2. K6. P2. Tw2R. P4. C6F. P4. C6B. P4. Tw2R. P2. K6. P2. Tw2R. P3. K1.

9th row: K1. P3. Tw2R. P2. K6. P2. Tw2R. P3. T4B. T4F. P2. T4B. T4F. P3. Tw2R. P2. K6. P2. Tw2R. P3. K1.

11th row: K1. P3. Tw2R. P2. C6B. P2. Tw2R. P2. (T4B. P2. T4F) twice. P2. Tw2R. P2. C6F. P2. Tw2R. P3. K1.

13th row: K1. P3. Tw2R. P2. K6. P2. Tw2R. P2. K3. P4. C6F. P4. K3. P2. Tw2R. P2. K6. P2. Tw2R. P3. K1.

15th row: K1. P3. Tw2R. P2. K6. P2. Tw2R. P2. (T4F. P2. T4B) twice. P2. Tw2R. P2. K6. P2. Tw2R. P3. K1.

17th row: As 5th row.

19th row: K1. P3. Tw2R. P2. C6B. P2. Tw2R. P4. C6B. P4. C6F. P4. Tw2R. P2. C6F. P2. Tw2R. P3. K1.

21st row: As 9th row.

23rd row: K1. P3. Tw2R. P2. K6. P2. Tw2R. P2. (T4B. P2. T4F) twice. P2. Tw2R. P2. K6. P2. Tw2R. P3. K1.

24th row: As 2nd row.

Rep last 24 rows for Cable Pat once more.

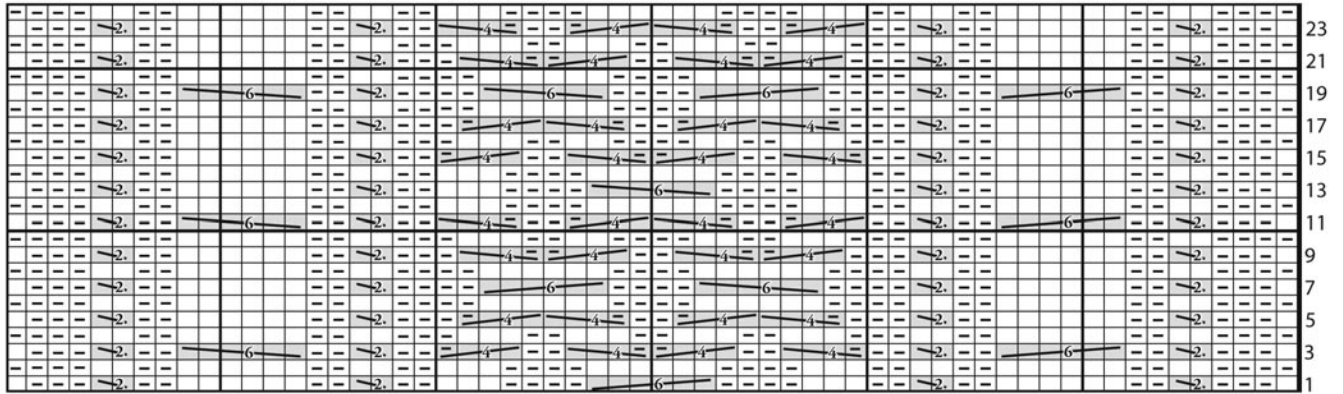
Next row: (RS). K3. *K2tog. K2. Rep from * to last st. K1. 46 sts.

Cast off knitwise (WS).



P.O. Box 40, Listowel ON N4W 3H3
"home style... life style... your style."

CHART: BLOCK #7



Start Here

KEY

= Knit on RS rows, purl on WS rows

= C6B

= T4B

= Tw2R

= Purl on RS rows, knit on WS rows

= C6F

= T4F